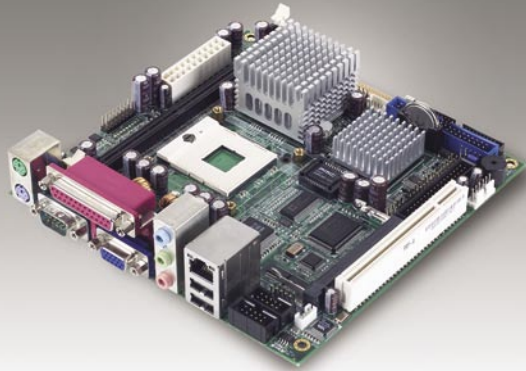


# AIMB-250-B

## Low Power Mini-ITX Motherboard with Rich I/O Integration Features

**NEW**



### Features

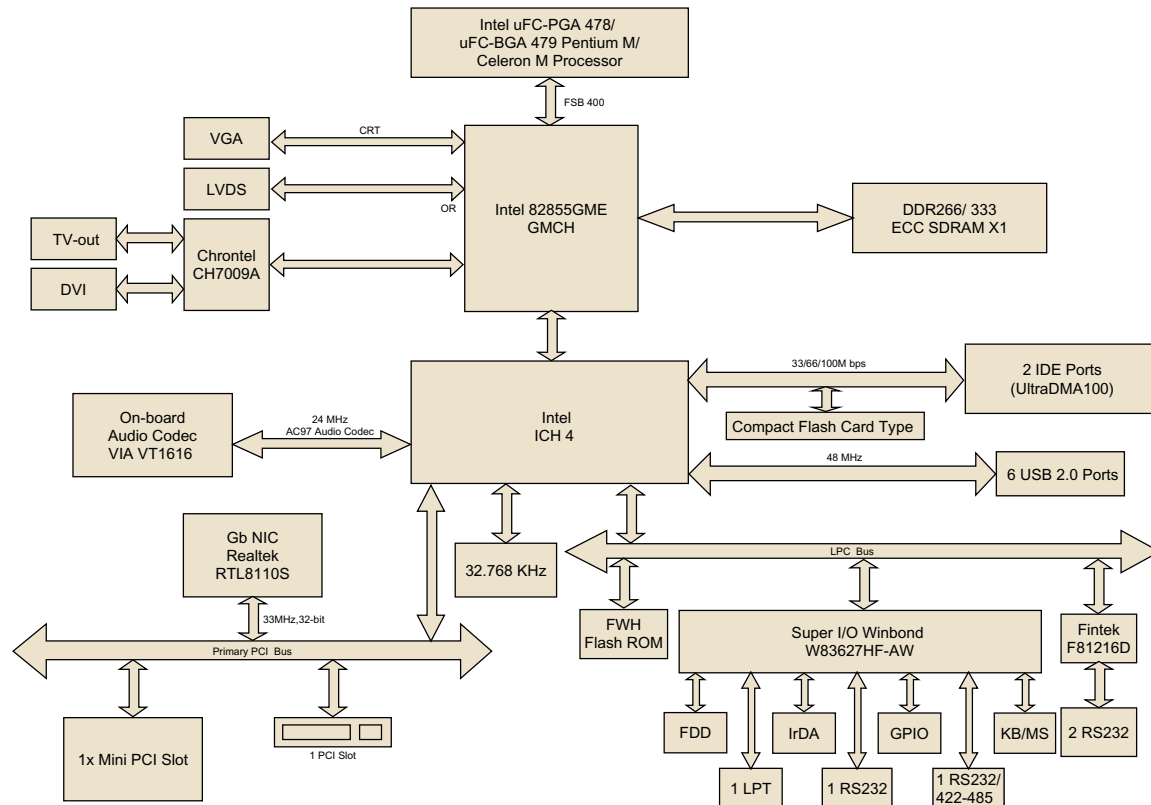
- Supports Intel® µFC-PGA 478/µFC-BGA 479 Pentium® M/Celeron® M CPU
- Intel 82855GME Chipset
- One DIMM socket supports up to 1 GB DDR 266/333 SDRAM
- 2-CH LVDS, DVI
- 5.1 CH Audio, TV-out
- Realtek™ RTL8110S Gigabit LAN
- One PCI, one Mini PCI, Type I/II CF
- Four COM, six USB 2.0, 16-bit GPIO



### Specifications

Processor System	CPU	Intel Pentium M	Intel Celeron M	
	Max. Speed	1.8 GHz	1.5 GHz	
	Front Side Bus	400 MHz	400 MHz	
	L2 Cache	2 MB	1 MB	
	Chipset	Intel 82855GME + ICH4		
	BIOS	Award™ 4Mb FWH		
Expansion Slot	PCI	32-bit/33MHz, 1 slot		
	Mini-PCI	32-bit/33MHz, 1 slot		
Memory	Technology	DDR 266/333 SDRAM (ECC/Non-ECC support)		
	Max. Capacity	1 GB		
	Socket	One 184-pin DIMM socket		
Graphic	Controller	Chipset Integrated VGA Controller		
	VRAM	Shared system memory up to 64 MB video memory		
	LVDS	Single channel 18-bit/Dual-channel 36-bit LVDS		
	TV-Out	Supports both S-video and composite video		
	DVI	Chrontel® CH7009A TV encoder supports both NTSC/PAL		
	Dual Display	Chrontel CH7009A DVI transmitter up to 135M pixels/second CRT + LVDS, or DVI/TV-out + LVDS or CRT + DVI		
Ethernet	Interface	10/100/1000Base-T		
	Controller 1	LAN 1 Realtek™ RTL8110S Gigabit LAN (PCI)		
	Connector	1 (RJ45)		
EIDE	Mode	2 x EIDE (Ultra DMA 100)		
	Channel	2		
Rear I/O	VGA	1		
	Ethernet	1		
	USB	2 (USB 2.0 ports)		
	Audio	Mic-In, Line-In, Line-Out (VIA® VT1616 supports 5.1 CH AC97 Audio)		
	Parallel	1		
	Serial	1 (RS-232/422/485), supply 5 V or 12 V via jumper		
	PS/2	2 (keyboard and mouse)		
Internal Connector	LVDS	1		
	TV-Out	1		
	DVI	1		
	USB	4 (USB 2.0 ports)		
	Serial	3		
	IDE	2 (40/44 Pin)		
	Compact Flash	1		
	IrDA	115k bps, IrDA 1.0 compliant		
	FDD	1		
	DIO	16-bit General Purpose I/O for DI and DO		
Watchdog Timer	Output	System reset		
	Interval	Programmable 1 – 255 sec.		
Power Requirement	Typical	Pentium M 1.8 GHz, 256 MB DDR SDRAM		
		+5 V	+3.3 V	+12 V
		3.61 A	3.72 A	0.31 A
				+5 VSB
Environment		Operating		
	Temperature	0 – 60° C (32 – 140° F)		
Physical Characteristics	Dimensions	170 mm x 170 mm (6.69" x 6.69")		

## Block Diagram



## Ordering Information

Part Number	Specification
AIMB-250F-00B1E	Intel Pentium M/Celeron M Mini ITX Motherboard with VGA, 2-CH LVDS, DVI, TV-out, 5.1 CH Audio, Gb LAN, CF, PCI, Mini PCI, 4 COM, 6 USB 2.0 & GPIO

## Packing List

Description	Quantity
AIMB-250 SBC	x 1
IDE HDD cable (40 pin)	x 1
IDE HDD cable (44 pin)	x 1
FDD cable	x 1
CPU Cooler	x 1
I/O port bracket	x 1
Startup Manual	x 1
Driver CD	x 1
Serial cable (RS-232)	x 3

## Bracket View



AIMB-250F-00B1E

## Accessory

Part Number	Description
1700003434	TV-Out cable
1700003433	USB cable
1700003435	DVI cable